



Photo © OCHA / Yashmina Guerda

INGO HUMANITARIAN DASHBOARD ON NE NIGERIA RESPONSE | Jan – Dec 2017

18
INGOs

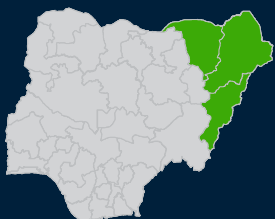
50
LGAs



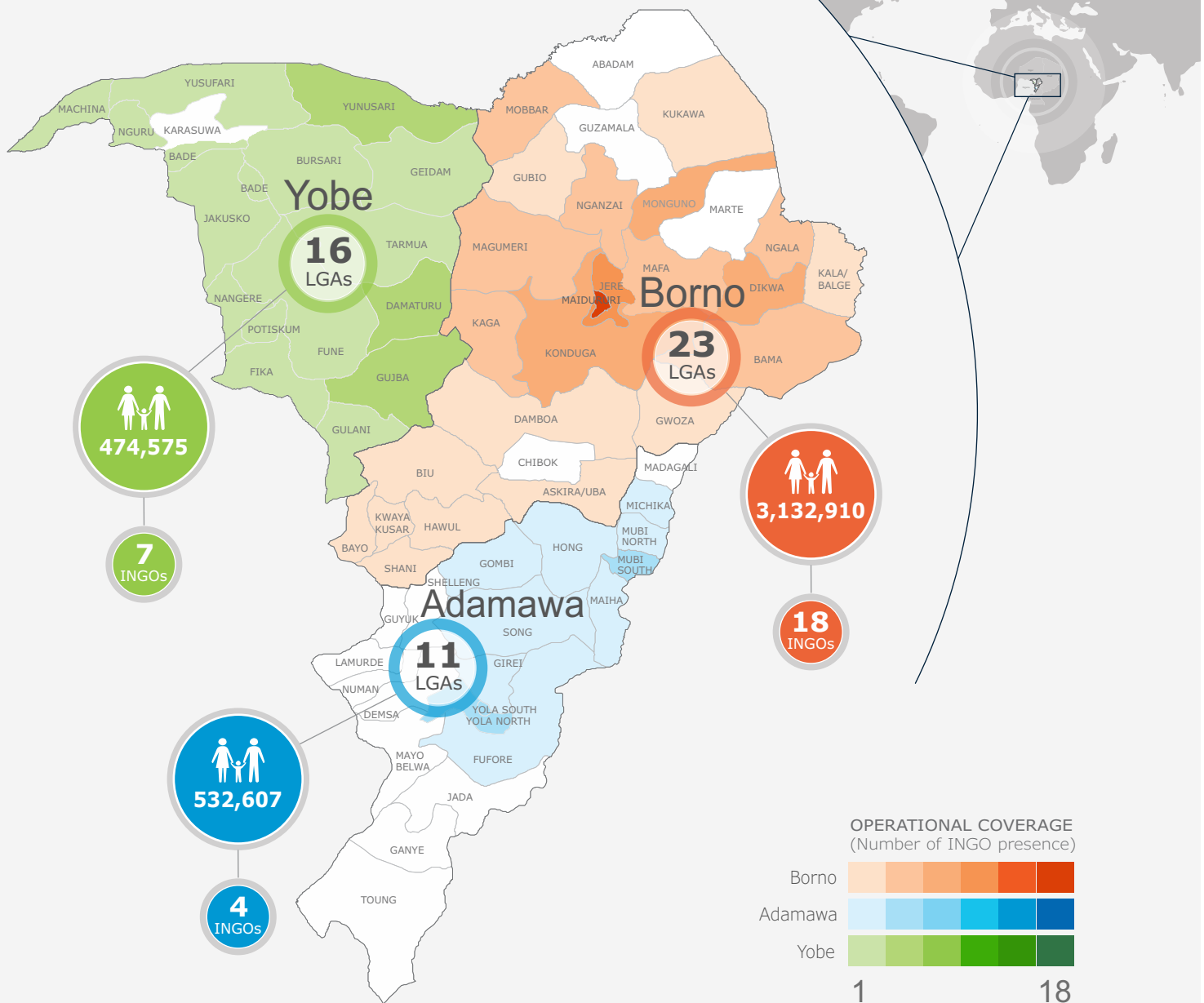
4,140,092

In 2017, over 4 million people received humanitarian and recovery assistance from 18 INGOs across 50 LGAs in north-east states of Borno, Adamawa and Yobe. WASH has the highest reach of all the nine listed sectors, with two INGOs involved in recovery initiatives (livelihood, mine risk education and peace building).

National staff made up 91% of the total 1,307 staff of ten INGOs working in the north-east response.



Overview Summary



Operational Coverage

Borno State

Active Member	No. of LGAs
ACF	10
ACTED	2
ALIMA	4
CARE	8
COOPI	1
DRC	12
FHI360	10
INTERMOS	6
IRC	7
MAG	6
Malteser	2
MCN	6
NRC	8
PUI	3
SCI	7
Solidarites	5
Street	1
ZOA	2

Adamawa State

Active Member	No. of LGAs
DRC	10
FHI360	7
IRC	9
NRC	4

Yobe State

Active Member	No. of LGAs
ACF	14
CARE	3
COOPI	6
DRC	2
IRC	2
NRC	1
FHI360	8

Staffing



10
INGOs



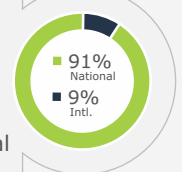
1,307
Total Staff



1,190
National



117
International



Operational Coverage by LGA

Borno State

ASKIRA/UBA (3)	BAMA (6)	BAYO (1)	BIU (3)	DAMBOA (1)
DRC, FHI360, IRC	ACF, CARE, DRC, FHI360, INTERSOS, MAG	FHI360	FHI360, MCN, SCI	MCN
DIKWA (7)	GUBIO (1)	GWOZA (3)	HAWUL (1)	JERE (11)
CARE, DRC, FHI360, INTERSOS, MCN, NRC, Solidarites	ACF	CARE, DRC, IRC	MCN	ACTED, ALIMA, CARE, DRC, FHI360, IRC, Malteser, NRC, SCI, Solidarites, ZOA
KAGA (4)	KALA/BALGE (2)	KONDUGA (7)	KUKAWA (2)	KWAYA KUSAR (1)
ACF, DRC, NRC, SCI	CARE, PUI	ACF, CARE, DRC, IRC, MAG, NRC, SCI	ACF, ALIMA	MCN
MAFA (4)	MAGUMERI (5)	MAIDUGURI (16)	MOBBAR (4)	MONGUNO (8)
ACTED, DRC, MAG, SCI	ACF, INTERSOS, IRC, PUI, SCI	ACF, ALIMA, CARE, COOPI, DRC, FHI360, IRC, MAG, Malteser, MCN, NRC, PUI, SCI, Solidarites, Street, ZOA	ACF, INTERSOS, MAG, NRC	ACF, ALIMA, DRC, FHI360, INTERSOS, IRC, NRC, Solidarites
NGALA (5)	NGANZAI (4)	SHANI (1)		
CARE, DRC, FHI360, INTERSOS, Solidarites	ACF, DRC, MAG, NRC	FHI360		

Adamawa State

FUFURE (3)	GEREI (3)	GOMBI (1)	HONG (2)	MAIHA (2)
DRC, FHI360, IRC	DRC, FHI360, IRC	DRC	FHI360, IRC	DRC, IRC
MICHIKA (3)	MUBI NORTH (3)	MUBI SOUTH (4)	SONG (1)	YOLA NORTH (4)
DRC, FHI360, IRC	DRC, IRC, NRC	DRC, FHI360, IRC, NRC	DRC	DRC, FHI360, IRC, NRC
YOLA SOUTH (4)				
DRC, FHI360, IRC, NRC				

Yobe State

BADE (3)	BURSARI (2)	DAMATURU (5)	FIKA (3)	FUNE (1)
ACF, COOPI, FHI360	CARE, FHI360	ACF, COOPI, DRC, IRC, NRC	ACF, COOPI, FHI360	ACF
GEIDAM (2)	GUJBA (4)	GULANI (2)	JAKUSKO (1)	MACHINA (1)
ACF, COOPI	ACF, DRC, FHI360, IRC	ACF, FHI360	ACF	ACF
NANGERE (1)	NGURU (1)	POTISKUM (3)	TARMUWA (1)	YUNUSARI (4)
ACF	ACF	ACF, COOPI, FHI360	ACF	ACF, COOPI, CARE, FHI360
YUSUFARI (2)				
CARE, FHI360				

ACF	Action Against Hunger
AAN	ActionAid Nigeria
ACTED	Agency for Technical Cooperation and Development
ALIMA	Alliance for International Medical Action
CAFOD	Catholic Agency For Overseas Development
CRS	Catholic Relief Services
HD Centre	Center for Humanitarian Dialogue
CIVIC	Centre for Civilians in Conflict
CAID	Christian Aid
CARE	Cooperative for Assistance and Relief Everywhere
COOPI	Cooperazione Internazionale
DRC	Danish Refugee Council
eHealth	eHealth Africa
FHI360	FHI360
Alert	International Alert
IMC	International Medical Corps
INSO	International NGO Safety Organization
IRC	International Rescue Committee
INTEROSOS	INTEROSOS

Malteser	Malteser International
MdM	Medecin Du Monde
MCN	Mercy Corps Nigeria
MAG	Mines Advisory Group
NDI	National Democratic Institute
NRC	Norwegian Refugee Council
Oxfam	Oxfam International
Plan	Plan International
PUI	Premiere Urgence Internationale
SCI	Save the Children International
Search	Search for Common Ground
SIF	Secours Islamique France
Solidarites	Solidarites International
SOS	SOS Children's Villages
Street	Street Child
VSO	Voluntary Services Overseas
WaterAid	WaterAid Nigeria
ZOA	ZOA International

Sector Reach

SECTOR	MEMBERS	NGO	NORTH-EAST	BORNO	ADAMAWA	YOBE
 Camp Coordination	INTEROSOS	1	481,475 <small>% reached by State</small>	481,475	0	0
 Early Recovery & Livelihood	DRC, MAG, MCN, Street	4	96,409 <small>% reached by State</small>	95,407	1,002	0
 Education	COOPI, MCN, SCI, Street	4	123,805 <small>% reached by State</small>	123,805	0	0
 Food Security	ACF, CARE, COOPI, DRC, INTERSOS, IRC, MCN, NRC, PUI, SCI, ZOA	11	837,351 <small>% reached by State</small>	790,214	14,637	32,500
 Health	ACF, ALIMA, CARE, FHI360, INTERSOS, IRC, MCN, PUI	8	1,217,878 <small>% reached by State</small>	1,029,759	61,595	126,524
 Nutrition	ALIMA, CARE, COOPI, FHI360, INTERSOS, IRC, MCN, PUI, SCI	9	885,567 <small>% reached by State</small>	617,872	46,254	221,441
 Peace/Conflict	DRC, MCN	2	9,604 <small>% reached by State</small>	9,030	574	0
 Protection	COOPI, DRC, FHI360, IRC, MAG, MCN, SCI, Street	8	663,520 <small>% reached by State</small>	427,172	41,943	194,405
 Security/Safety	IRC	1	87,384 <small>% reached by State</small>	64,875	15,365	7,144
 Shelter/NFIs	ACTED, DRC, FHI360, INTERSOS, Malteser, MCN, NRC, Solidarites	8	284,709 <small>% reached by State</small>	282,728	1,981	0
 WaSH	DRC, FHI360, INTERSOS, IRC, Malteser, MCN, NRC, Solidarites, ZOA	9	1,767,444 <small>% reached by State</small>	1,250,861	510,488	6,095
 *Others	ACTED, FHI360, NRC, PUI	4	227,705 <small>% reached by State</small>	207,363	9,402	10,940

*Others are services offered to people which are not captured under any of the listed sectors.

